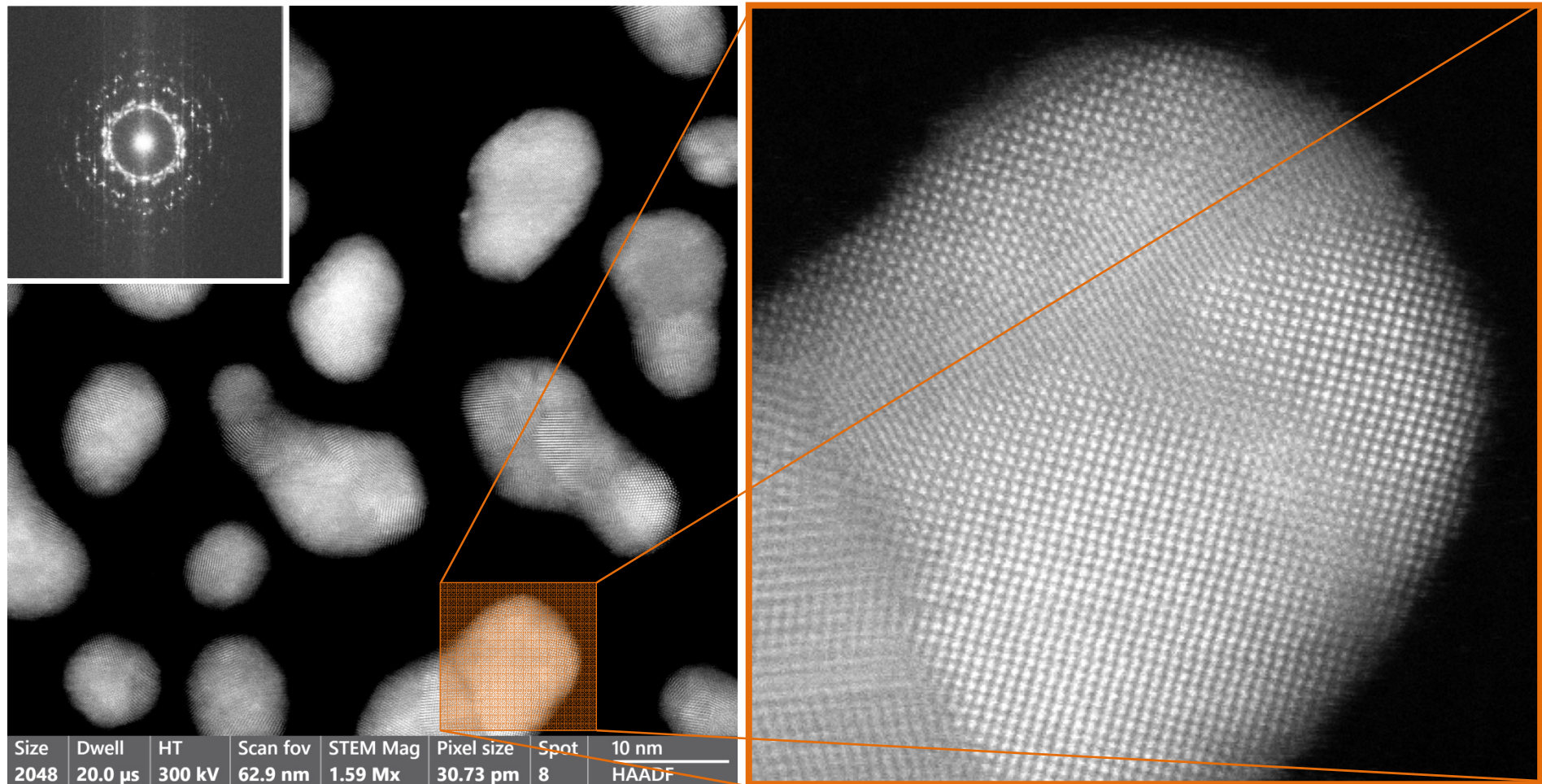


Model 206 – Gold lattice



Size	Dwell	HT	Scan fov	STEM Mag	Pixel size	Spot	10 nm
2048	20.0 μ s	300 kV	62.9 nm	1.59 Mx	30.73 μ m	8	HAADF

HAADF STEM image of gold grains on amorphous carbon at cryo temperature ($< -170^{\circ}\text{C}$). It was acquired with ThermoFisher Spectra Ultra STEM using Simple Origin cryogenic inert gas / vacuum transfer holder Model 206. Courtesy of Dr. Nestor J. Zaluzec, Argonne Natl. Lab, USA